

Floating WPC Flooring Installation Guide

Heritage Collection
PRIME WPC FLOORING

General Information Before Installation

Please note: Examine every plank prior to installation. Should any defects be detected, refrain from using the plank and promptly notify your supplier.

While acclimation is not explicitly mandated (24 hours acclimation is still recommended), optimal installation practice suggests installing the product near the intended site temperature, typically aiming for 70°F (21°C), but at a minimum between 55°F (13°C) and 100°F (38°C).

To prevent discoloration and UV fading, refrain the flooring from prolonged exposure to direct sunlight. It is advisable to use drapes or blinds during peak sunlight hours. Excessive temperature caused by direct sunlight can also cause thermal expansion and result in flooring gapping.

For adequate material preparation, determine the total room area and include an additional 5%-7% for custom cutting purposes.

For installations in newly constructed homes or buildings, the installer/owner should verify that all windows and doors are in place, and ensure that wall and floor boards are thoroughly dry. Additionally, the home's HRV/heating/air-conditioning system should be operational and set to maintain the living conditions anticipated for the floor. It is advisable to schedule flooring installation as the final stage of the construction project.

Combine and install products from multiple cartons to achieve the desired variation in plank appearance.

While this flooring offers waterproof qualities and effectively fastens the flooring panels on all sides, excessive moisture in the subfloor may foster mold, mildew, and other moisture-related problems such as the entrapment of moisture emissions beneath the flooring. This could potentially lead to an unhealthy indoor environment. Flexible silicone sealant should be used to fill the expansion gap in bathroom installations.

Utilize cementitious patching and leveling compounds that meet or surpass the specified maximum moisture level and pH criteria.

Installation of Heritage flooring on stairs - the nosing must be directly stuck with an appropriate glue. It is also essential to sand the substrate surface to remove any residual objects, waxes or paints, this will assist the adhesion.

Heritage Collection comes with an attached underlayment pad, additional pad is not recommended and may lead to a negative impact on the installation and performance of this flooring and the locking system. For multi-level residential, commercial, or other installations where specific acoustic ratings are required, you may use a dense underlayment such as cork or rubber mats up to 5mm in thickness. It is recommended to contact your local acoustic underlayment suppliers to ensure these underlayments are appropriate and suitable for installation with Heritage Flooring.

Floating WPC Flooring Installation Guide

Heritage Collection
PRIME WPC FLOORING

Subfloors

All subfloors must be clean (completely swept and devoid of any debris), dry, smooth, and flat (within 3/16" in 10' or 1/8" in 6'). Should the surface not be level, smooth out any high spots with sanding and fill any low areas using a leveling patch made from Portland cement-based material.

All wooden floors should be elevated a minimum of 18" (457.2 mm) above ground level to ensure proper ventilation. Additionally, it is crucial to establish sufficient cross-ventilation. Install an appropriate vapor barrier to cover the ground surface of any crawl space.

When installing on a concrete slab, ensure it is dry, clean, and adequately cured for a minimum of 6 weeks before installation. The concrete should be free from dust, powder, flaking, solvents, paint, wax, grease, oil, and other contaminants. Additionally, the moisture content of the concrete subfloor should not exceed 5%.

For all other types of subfloors such as plywood, OSB, particleboard, chipboard, wafer board, etc., ensure they are structurally sound and installed according to the manufacturer's guidelines. This flooring can be laid over current non-cushioned resilient flooring, ceramic tile, and pre-existing wood floors, provided that these surfaces are clean, level, securely bonded to the sub-floor, and exhibit no cupping or deflection.

Installation Tools and Supplies

Tape measure, solid rubber mallet, broom, dustpan, tapping block, safety glasses and gloves, wedges (minimum 8mm), string line, pencil, utility knife, jigsaw/circular saw/table saw. Other tools may be required depending on site specifications. A dust mask must be worn at all times especially when cutting the planks to prevent inhalation of the dust.

Radiant Heating

Heritage Flooring can be installed over a radiant heating system, the subfloor can be concrete, wood or a combination of both; ensure a flat and smooth surface by providing a minimum ½ inch over topping.

When installing over radiant heated subfloors, turn off the heat for 24 hours before, during, and 24 hours after installation. After the installation, the maximum operating temperature should never exceed 28°C, it is recommended that use of an in-floor sensor to monitor temperature and avoid overheating.

It is not advised to use electric heating mats that are not embedded into the subfloor beneath this flooring. Utilizing such mats directly underneath could potentially void the warranty in the event of failure. It is recommended to install the flooring exclusively over embedded hydronic radiant floor heating systems and adhere to the provided guidelines.

Locking Mechanism

Heritage Flooring comes with a strong, easy to install locking system. Välinge 5G patented locking system provides ultra strong locking strength on both long and short sides. Follow the 5G installation instructions (Source: <https://valinge.se/>) and this flooring is designed and manufactured exclusively for floating installation.

Floating WPC Flooring Installation Guide

Heritage Collection
PRIME WPC FLOORING

Floating Flooring Installation Instructions:

Heritage Flooring has been designed to be installed specifically as a floating flooring. Expansion joints are required at all perimeters and fixtures (minimum 8mm) for general installations. Depending on the layout, size and floor plan, additional expansion gaps and joints may be required. Do not install kitchen cabinets, island, and other heavy fixed items on the floor. The installer/owner/contractor is responsible for inspecting the delivered flooring products, ensuring the correct product (product, color, size, grade, finish, quality etc.) has been delivered prior to installation. Prior to installation, it is recommended that you have a proper installation layout and plan, this will assist in having a superior finish. Check all heights including but not limited to door frame clearance, tiles, windows etc. Door jambs and window frames will likely be undercut to allow the flooring to move freely. Although Heritage Flooring is waterproof, the subfloor will still need to be protected from moisture.

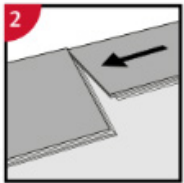
Important information

- The flooring must be acclimated a minimum of 24 to 48 hours prior to installation in the room where the installation will take place
- In rooms larger than 20 x 20 m (400 m²), the flooring must be installed in smaller sections with expansion joints
- The distance to walls and other permanent pieces of construction elements (such as pillars and kitchen islands) should be approximately 5 mm
- Never install very heavy pieces of furniture such as kitchen islands/cabinets on top of the flooring
- The indoor climate should have a temperature between 15-23 ° C and relative air humidity between 30-60% (according to Swedish Standards Institute).

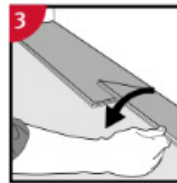
General Installation Instructions



1 First plank, first row
Place a spacer with predicted thickness to the left and position the panel against the wall. Later, after 3 rows, you can easily position the flooring against the front wall with predicted spacers.



2 Second plank, first row
Place this panel gently close to the short end of the first one.



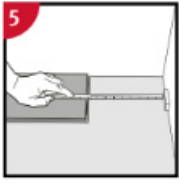
3 When folding down it is important to start from the corner closest to the previous row, folding down towards the center, and continue towards the opposite long side. During the fold down, make sure the panels are close to each other.



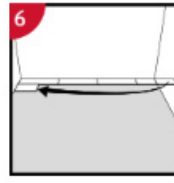
4 Afterwards press slightly along the short end just installed.

Floating WPC Flooring Installation Guide

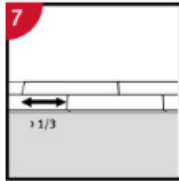
Heritage Collection
PRIME WPC FLOORING



At the end of the first row, put a spacer to the wall and measure the length of the last plank to fit.



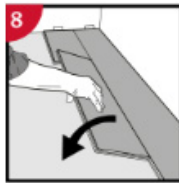
Second row
First plank min length 400 mm. Put a spacer against the left wall.



Staggered joint distance i.e. minimum distance between short ends of panels in parallel rows shall not be less than the given length.



After 2-3 rows
Adjust the distance to the front wall by placing spacers.

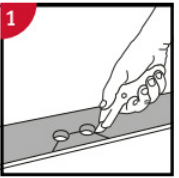


Second plank second row
Place the panel gently and close to the short end of the previous panel and fold it down in a single action movement.

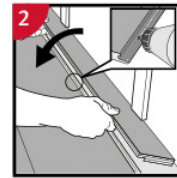
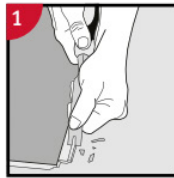


Last row (and perhaps also first row).
Minimum width 50 mm. Place a spacer to the wall before measuring. Make a simple drawing tool (piece of wood with a hole) and mark the panel along the wall. Cut the panels lengthwise including the flexible tongues.

Installation around radiator/heating pipes



Drill holes two times larger than the diameter of the pipes. Remove a piece of the panel with a utility knife. Put the panel on one side of the pipes and the removed piece on the other side.



Remove the vertical locking part of the strip with a chisel, put applicable glue on the strip and push the planks horizontally together. Place some spacers between last board and the wall.

Dismantling panels



Separate the whole row by carefully lifting up and release the whole row.

Fold up the row and release the whole long side.



Disassemble the panels by sliding the short ends horizontally.

Never fold up a panel, as this damage the profile.

Reference: www.5gfolddown.com