

# Floating vinyl Flooring Installation Guide

**ZENITH PLUS**  
COLLECTION

---

## General Information Before Installation

Please note: Examine every plank prior to installation. Should any defects be detected, refrain from using the plank and promptly notify your supplier.

While acclimation is not explicitly mandated (24 hours acclimation is still recommended), optimal installation practice suggests installing the product near the intended site temperature, typically aiming for 70°F (21°C), but at a minimum between 55°F (13°C) and 100°F (38°C).

To prevent discoloration and UV fading, refrain the flooring from prolonged exposure to direct sunlight. It is advisable to use drapes or blinds during peak sunlight hours. Excessive temperature caused by direct sunlight can also cause thermal expansion and result in flooring gapping.

For adequate material preparation, determine the total room area and include an additional 5%-7% for custom cutting purposes.

For installations in newly constructed homes or buildings, the installer/owner should verify that all windows and doors are in place, and ensure that wall and floor boards are thoroughly dry. Additionally, the home's HRV/heating/air-conditioning system should be operational and set to maintain the living conditions anticipated for the floor. It is advisable to schedule flooring installation as the final stage of the construction project.

Combine and install products from multiple cartons to achieve the desired variation in plank appearance.

While this flooring offers waterproof qualities and effectively fastens the flooring panels on all sides, excessive moisture in the subfloor may foster mold, mildew, and other moisture-related problems such as the entrapment of moisture emissions beneath the flooring. This could potentially lead to an unhealthy indoor environment. Flexible silicone sealant should be used to fill the expansion gap in bathroom installations.

Utilize cementitious patching and leveling compounds that meet or surpass the specified maximum moisture level and pH criteria.

Installation of Zenith Plus flooring on stairs - the nosing must be directly stuck with an appropriate glue. It is also essential to sand the substrate surface to remove any residual objects, waxes or paints, this will assist the adhesion.

Zenith Plus Collection comes with an attached underlayment pad, additional pad is not recommended and may lead to a negative impact on the installation and performance of this flooring and the locking system. For multi-level residential, commercial, or other installations where specific acoustic ratings are required, you may use a dense underlayment such as cork or rubber mats up to 5mm in thickness. It is recommended to contact your local acoustic underlayment suppliers to ensure these underlayments are appropriate and suitable for installation with Zenith Plus Flooring.

# Floating vinyl Flooring Installation Guide

**ZENITH PLUS**  
COLLECTION

## Subfloors

All subfloors must be clean (completely swept and devoid of any debris), dry, smooth, and flat (within 3/16" in 10' or 1/8" in 6'). Should the surface not be level, smooth out any high spots with sanding and fill any low areas using a leveling patch made from Portland cement-based material.

All wooden floors should be elevated a minimum of 18" (457.2 mm) above ground level to ensure proper ventilation. Additionally, it is crucial to establish sufficient cross-ventilation. Install an appropriate vapor barrier to cover the ground surface of any crawl space.

When installing on a concrete slab, ensure it is dry, clean, and adequately cured for a minimum of 6 weeks before installation. The concrete should be free from dust, powder, flaking, solvents, paint, wax, grease, oil, and other contaminants. Additionally, the moisture content of the concrete subfloor should not exceed 5%.

For all other types of subfloors such as plywood, OSB, particleboard, chipboard, wafer board, etc., ensure they are structurally sound and installed according to the manufacturer's guidelines. This flooring can be laid over current non-cushioned resilient flooring, ceramic tile, and pre-existing wood floors, provided that these surfaces are clean, level, securely bonded to the sub-floor, and exhibit no cupping or deflection.

## Installation Tools and Supplies

Tape measure, solid rubber mallet, broom, dustpan, tapping block, safety glasses and gloves, wedges (minimum 8mm), string line, pencil, utility knife, jigsaw/circular saw/table saw. Other tools may be required depending on site specifications. A dust mask must be worn at all times especially when cutting the planks to prevent inhalation of the dust.

## Radiant Heating

Zenith Plus Flooring can be installed over a radiant heating system, the subfloor can be concrete, wood or a combination of both; ensure a flat and smooth surface by providing a minimum ½ inch over topping.

When installing over radiant heated subfloors, turn off the heat for 24 hours before, during, and 24 hours after installation. After the installation, the maximum operating temperature should never exceed 28°C, it is recommended that use of an in-floor sensor to monitor temperature and avoid overheating.

It is not advised to use electric heating mats that are not embedded into the subfloor beneath this flooring. Utilizing such mats directly underneath could potentially void the warranty in the event of failure. It is recommended to install the flooring exclusively over embedded hydronic radiant floor heating systems and adhere to the provided guidelines.

## Locking Mechanism

Zenith Plus Flooring comes with a strong, easy to install locking system. Välinge 5G patented locking system provides ultra strong locking strength on both long and short sides. Follow the 5G installation instructions (Source: <https://valinge.se/>) and this flooring is designed and manufactured exclusively for floating installation.

# Floating vinyl Flooring Installation Guide

**ZENITH PLUS**  
COLLECTION

## Floating Flooring Installation Instructions:

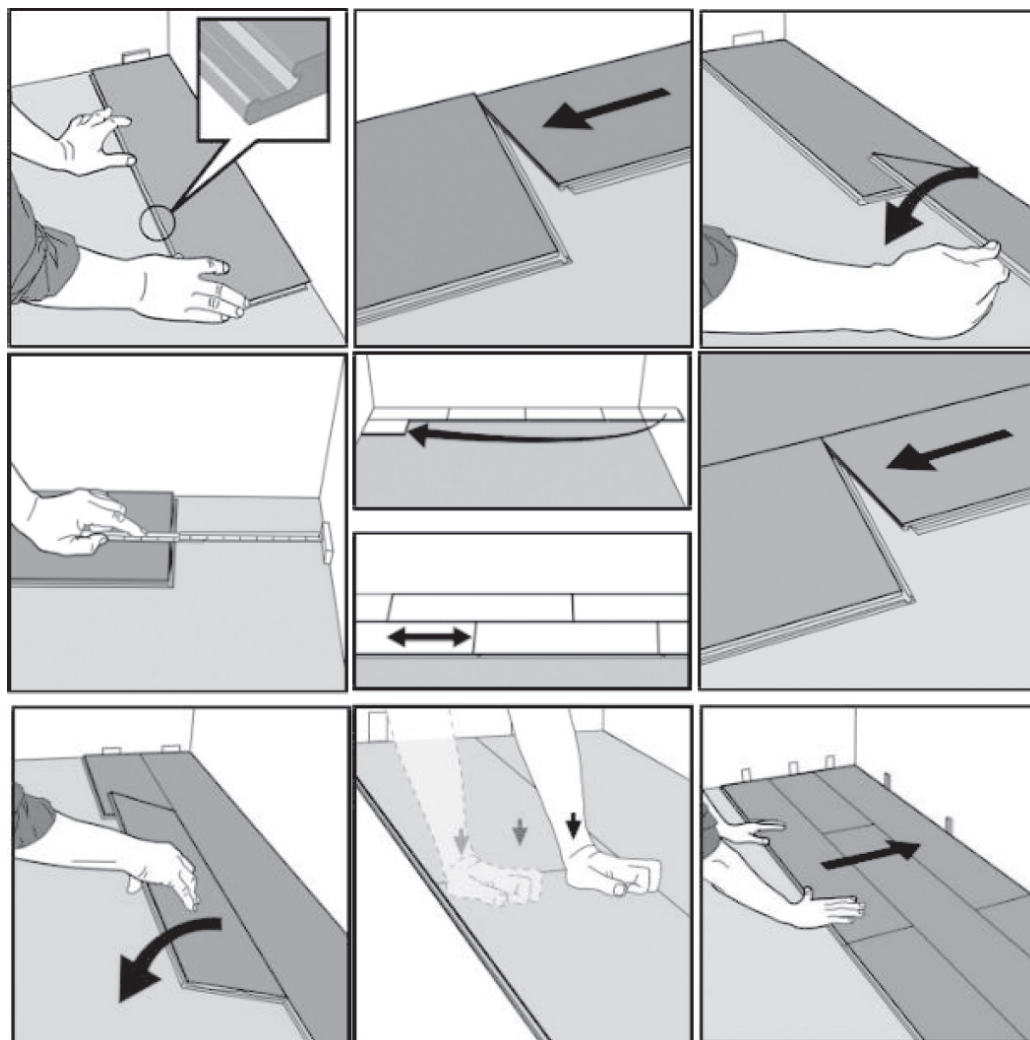
Zenith Plus Flooring has been designed to be installed specifically as a floating flooring. Expansion joints are required at all perimeters and fixtures ( minimum 8mm) for general installations. Depending on the layout, size and floor plan, additional expansion gaps and joints may be required. Do not install kitchen cabinets, island, and other heavy fixed items on the floor. The installer/owner/contractor is responsible for inspecting the delivered flooring products, ensuring the correct product (product, color, size, grade, finish, quality etc.) has been delivered prior to installation. Prior to installation, it is recommended that you have a proper installation layout and plan, this will assist in having a superior finish. Check all heights including but not limited to door frame clearance, tiles, windows etc. Door jambs and window frames will likely be undercut to allow the flooring to move freely. Although Zenith Plus Flooring is waterproof, the subfloor will still need to be protected from moisture.

## Follow the instructions and diagrams below to start your installation:

1. After thoroughly cleaning the site and minimum subfloor flatness requirement has met, begin laying from left to right. Ensure the tongue side is facing the wall, with spacers from the starting wall. Make sure the width of the boards in the first and last row are not less than 50mm.
2. The second plank, in the first row. Drop the plank and tap with a solid rubber mallet to ensure the drop lock ends locked properly. Rub your finger over the surface of this joint to make sure the joint is flush and level. If the joint is not flush, have lipping or do not appear to be clicked correctly, disassemble the two planks following the disassembly guide below. If planks are damaged, replace them with new planks. Tapping the butt joints too hard may damage the underside of the locking system.
3. At the end of the first row, ensure to leave appropriate gaps and measure the length of the final board in the first row (not shorter than 12 inches).
4. Start the second row with the remainder of the last board used in the first row. Again, this plank should be not shorter than 12 inches to achieve the best appearance. Install the first plank of the second row by placing the tongue into the groove of the planks in the first row, drop the planks and ensure they are securely locked into place.
5. It is extremely important to constantly ensure the boards are square, straight and that each joint has locked together properly and the surface is flush. After laying 2-3 rows, double check if the expansion gaps are in place. Continue installing planks until the end of the space, ensure all exposed edges are protected with appropriate trims or transition moldings.
6. If the flooring is being installed in the damp areas (ex. bathrooms), it is mandatory to caulk the gaps with a waterproof silicone sealer. Do not fasten wall moldings, skirting, trims, to the planks. No planks should be secured to the walls, subfloors, fixtures or any other accessories under any circumstances. If necessary, the door frames need to be trimmed to allow movement of the floor, expansion gaps are required at all times.
7. Do not caulk a floating floor, caulking a floating floor prevents the floor from moving.

# Floating vinyl Flooring Installation Guide

**ZENITH PLUS**  
COLLECTION



**Disassembly Guide:** Zenith Plus Flooring can be disassembled and reassembled if necessary as long as the flooring is not damaged. Disassemble the planks by sliding horizontally as shown in diagrams below.

