

Floating vinyl Flooring Installation Guide

VERSAILLES HERRINGBONE

General Information Before Installation

Please note: Examine every plank prior to installation. Should any defects be detected, refrain from using the plank and promptly notify your supplier.

While acclimation is not explicitly mandated (24 hours acclimation is still recommended), optimal installation practice suggests installing the product near the intended site temperature, typically aiming for 70°F (21°C), but at a minimum between 55°F (13°C) and 100°F (38°C).

To prevent discoloration and UV fading, refrain the flooring from prolonged exposure to direct sunlight. It is advisable to use drapes or blinds during peak sunlight hours. Excessive temperature caused by direct sunlight can also cause thermal expansion and result in flooring gapping.

For adequate material preparation, determine the total room area and include an additional 5%-7% for custom cutting purposes.

For installations in newly constructed homes or buildings, the installer/owner should verify that all windows and doors are in place, and ensure that wall and floor boards are thoroughly dry. Additionally, the home's HRV/heating/air-conditioning system should be operational and set to maintain the living conditions anticipated for the floor. It is advisable to schedule flooring installation as the final stage of the construction project.

Combine and install products from multiple cartons to achieve the desired variation in plank appearance.

While this flooring offers waterproof qualities and effectively fastens the flooring panels on all sides, excessive moisture in the subfloor may foster mold, mildew, and other moisture-related problems such as the entrapment of moisture emissions beneath the flooring. This could potentially lead to an unhealthy indoor environment. Flexible silicone sealant should be used to fill the expansion gap in bathroom installations.

Utilize cementitious patching and leveling compounds that meet or surpass the specified maximum moisture level and pH criteria.

Installation of Versailles flooring on stairs - the nosing must be directly stuck with an appropriate glue. It is also essential to sand the substrate surface to remove any residual objects, waxes or paints, this will assist the adhesion.

Versailles Collection comes with an attached underlayment pad, additional pad is not recommended and may lead to a negative impact on the installation and performance of this flooring and the locking system. For multi-level residential, commercial, or other installations where specific acoustic ratings are required, you may use a dense underlayment such as cork or rubber mats up to 5mm in thickness. It is recommended to contact your local acoustic underlayment suppliers to ensure these underlayments are appropriate and suitable for installation with Versailles Flooring.

Subfloors

All subfloors must be clean (completely swept and devoid of any debris), dry, smooth, and flat (within 3/16" in 10' or 1/8" in 6'). Should the surface not be level, smooth out any high spots with sanding and fill any low areas using a leveling patch made from Portland cement-based material.

All wooden floors should be elevated a minimum of 18" (457.2 mm) above ground level to ensure proper ventilation. Additionally, it is crucial to establish sufficient cross-ventilation. Install an appropriate vapor barrier to cover the ground surface of any crawl space.

When installing on a concrete slab, ensure it is dry, clean, and adequately cured for a minimum of 6 weeks before installation. The concrete should be free from dust, powder, flaking, solvents, paint, wax, grease, oil, and other contaminants. Additionally, the moisture content of the concrete subfloor should not exceed 5%.

For all other types of subfloors such as plywood, OSB, particleboard, chipboard, wafer board, etc., ensure they are structurally sound and installed according to the manufacturer's guidelines. This flooring can be laid over current non-cushioned resilient flooring, ceramic tile, and pre-existing wood floors, provided that these surfaces are clean, level, securely bonded to the sub-floor, and exhibit no cupping or deflection.

Installation Tools and Supplies

Tape measure, solid rubber mallet, broom, dustpan, tapping block, safety glasses and gloves, wedges (minimum 8mm), string line, pencil, utility knife, jigsaw/circular saw/table saw. Other tools may be required depending on site specifications. A dust mask must be worn at all times especially when cutting the planks to prevent inhalation of the dust.

Radiant Heating

Versailles Flooring can be installed over a radiant heating system, the subfloor can be concrete, wood or a combination of both; ensure a flat and smooth surface by providing a minimum ½ inch over topping.

When installing over radiant heated subfloors, turn off the heat for 24 hours before, during, and 24 hours after installation. After the installation, the maximum operating temperature should never exceed 28°C, it is recommended that use of an in-floor sensor to monitor temperature and avoid overheating.

It is not advised to use electric heating mats that are not embedded into the subfloor beneath this flooring. Utilizing such mats directly underneath could potentially void the warranty in the event of failure. It is recommended to install the flooring exclusively over embedded hydronic radiant floor heating systems and adhere to the provided guidelines.

Locking Mechanism

Versailles Flooring comes with a strong, easy to install locking system. Välinge 5G patented locking system provides ultra strong locking strength on both long and short sides. Follow the 5G installation instructions (Source: <https://valinge.se/>) and this flooring is designed and manufactured exclusively for floating installation.

Floating vinyl Flooring Installation Guide

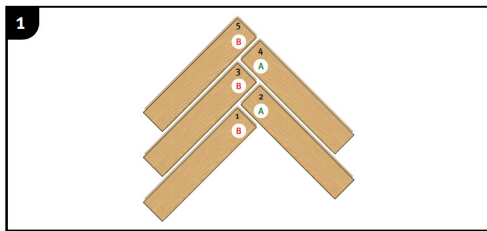
VERSAILLES HERRINGBONE

Floating Flooring Installation Instructions:

Versailles Flooring has been designed to be installed specifically as a floating flooring. Expansion joints are required at all perimeters and fixtures (minimum 8mm) for general installations. Depending on the layout, size and floor plan, additional expansion gaps and joints may be required. Do not install kitchen cabinets, island, and other heavy fixed items on the floor. The installer/owner/contractor is responsible for inspecting the delivered flooring products, ensuring the correct product (product, color, size, grade, finish, quality etc.) has been delivered prior to installation. Prior to installation, it is recommended that you have a proper installation layout and plan, this will assist in having a superior finish. Check all heights including but not limited to door frame clearance, tiles, windows etc. Door jambs and window frames will likely be undercut to allow the flooring to move freely. Although Versailles Flooring is waterproof, the subfloor will still need to be protected from moisture.

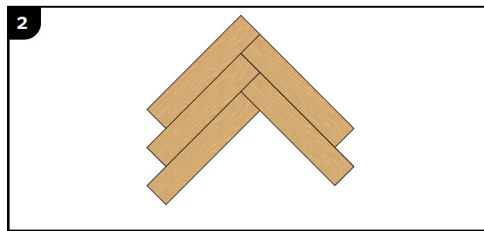
Follow the instructions and diagrams below to start your installation:

1. Build starting triangles



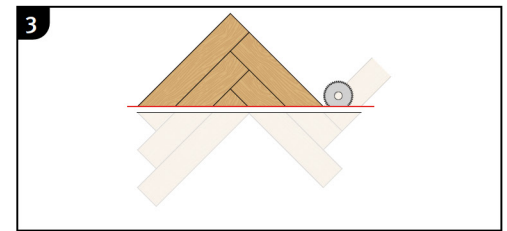
Take B-strips and A-strips and position them as shown above.

Note! The number of strips varies depending on the width of the strips used.



Install the strips precisely and in the order indicated by the numbers on the strips. Carefully check the joints between the strips after every strip that is added.

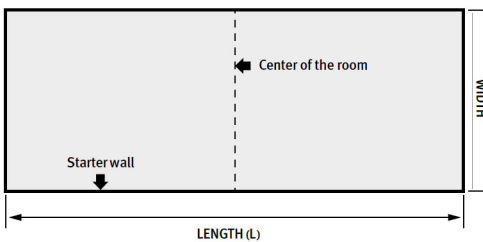
Note! No protruding edge may be felt!



Cut the triangle according to the indicated red line. Depending on the kind of saw you use, it may be useful to dismantle the triangle before sawing.

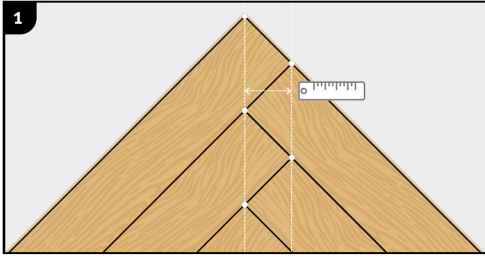
Note! The excess (below the line) is to be saved for last row installation.

2. Measuring the room

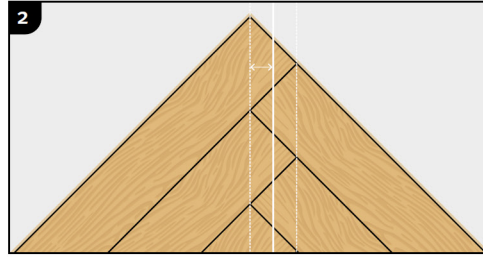


Define the wall from where you intend to start the installation. Mark out the center of the room.

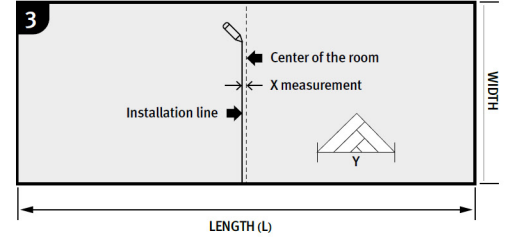
3. Calculating the number of triangles



Measure the distance between the two straight lines, originating from the corners of the strips.



Devide this number by two, and get the **X measurement**.



Drawing the installation line

Start from the center of the room. Parallel offset the line using the **X measurement** as distance.

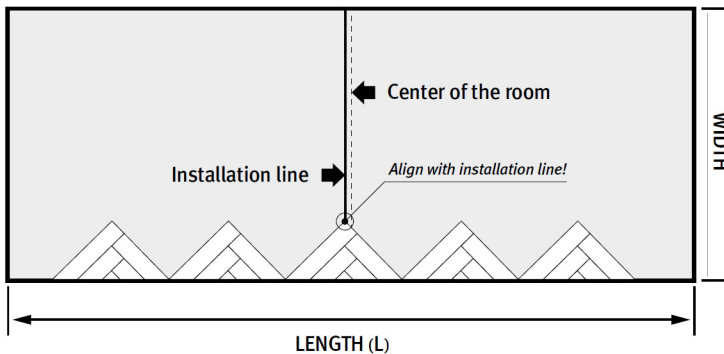
4

$$\frac{L + X}{Y} = \text{Quantity}$$

Calculate the number of needed starting triangles with the formula to the left.

Note! Round up to the next full number.

4. Start installation

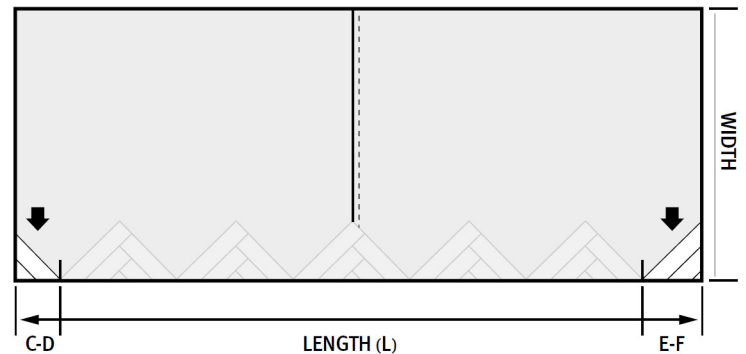


Lay out the triangles with their long side towards the starting wall.
Align the center triangle top with the installation line.

Make sure the underlay material is installed beforehand and the installation line remains visible.

Note! Use expansion wedges for the expansion gap.

5. Finalising the start row



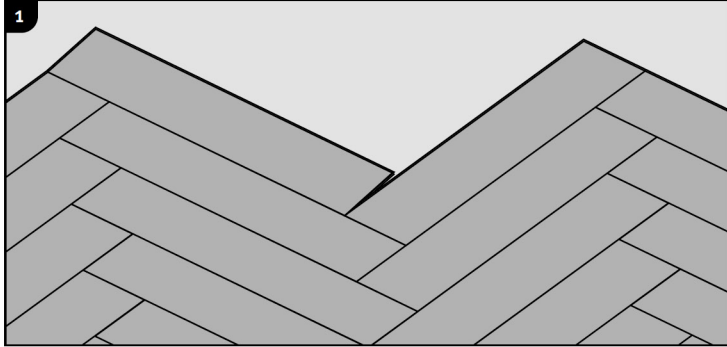
Now cut the distances C-D and E-F from the remaining triangle(s), and position them.

Note! In case you have calculated and built an uneven number of triangles, leave the outer two triangles aside. For the case that you have built an even number of triangles, lay one aside.

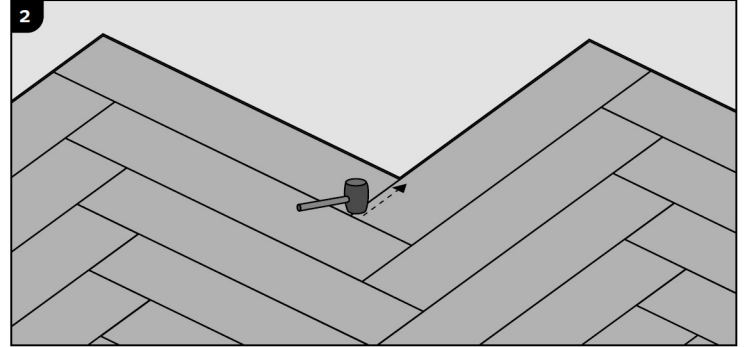
Floating vinyl Flooring Installation Guide

VERSAILLES HERRINGBONE

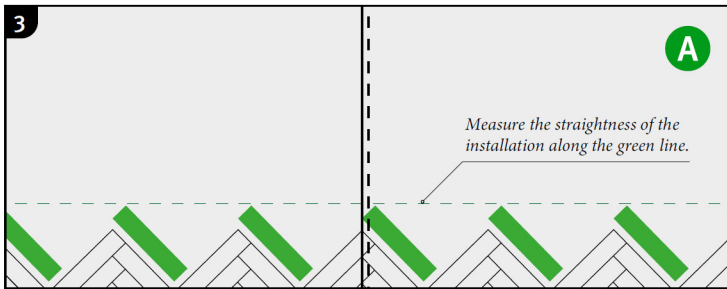
Further installation of pattern



The boards need to be locked into one another, using the 5Gi system. To connect a new board you have to use a rubber hammer.

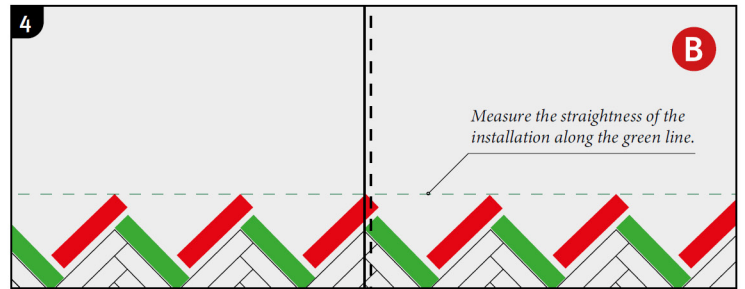


Use a rubber hammer and slightly knock at the 5Gi system to connect the short side. Start in the corner and work towards the end of the board.



Install **A-strips** to connect all triangles. The joints between the A-strip and the triangle need to be checked very carefully. No protruding edge may be felt!

Cut the most left piece to fit into the room, considering an expansion gap. Measure the straightness of the installation along the green line. Repeat that measuring with the straightedge progressively throughout the installation. Deviations need to be corrected, should they occur (see schematics below).

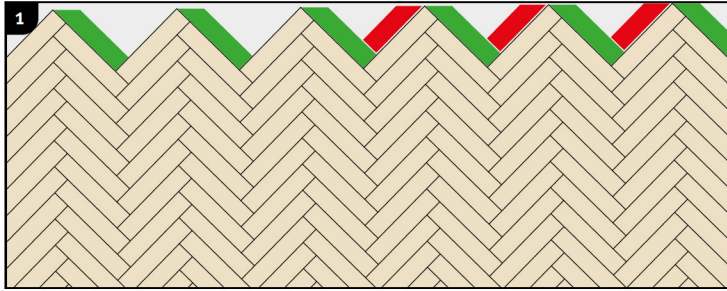


Now install **B- strips** and cut the most right piece to size.

Floating vinyl Flooring Installation Guide

VERSAILLES HERRINGBONE

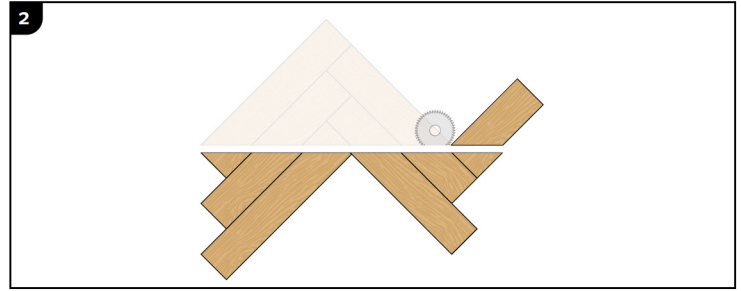
Last row installation



This alternating installation of A-strips and B-strips continues throughout the whole room. It is important to check frequently that:

- all expansion wedges remain in their position.
- all joints are closed and the strips are locked into one another.
- you follow the installation line.
- the tops of the strips in one line remain straight and perpendicular to the installation line

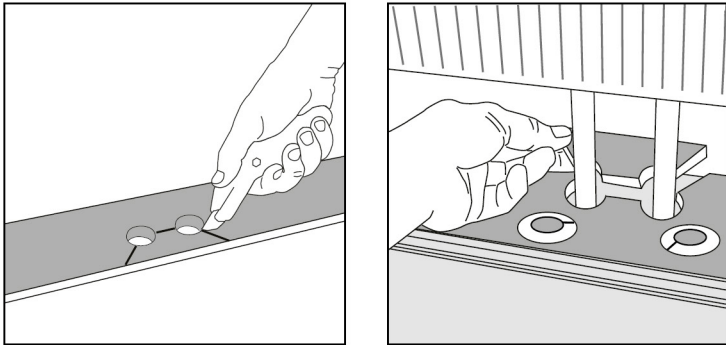
Note! Measure approx every fifth row.



Excess pieces from starting triangles:

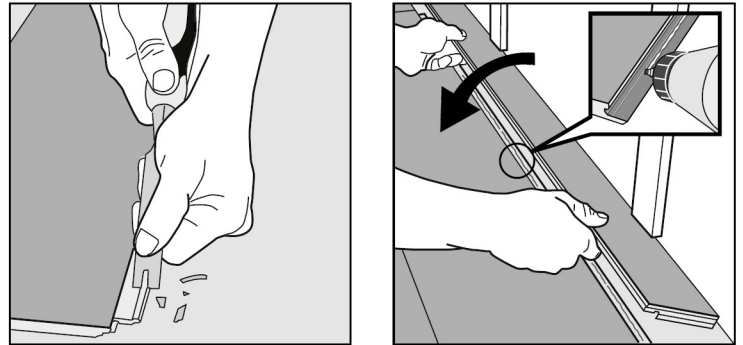
Dismantle the excess material from the starting triangles. Use it to close the open gaps to the finishing wall. Use the leftover from strips 1, 2 etc. consecutively and cut to size if necessary.

Installation around radiator/heating pipes



Drill holes two times larger than the diameter of the pipes. Remove a piece of the strip with a utility knife or a saw. Put the strip on one side of the pipes and the removed piece on the other side.

When angling is not possible



Remove the locking element according to the picture. Use an applicable glue to connect the strips. Press- place wedges between the glued strip and the wall.